

# Office of Applied Research & Innovation

Redefining **Possible**. Here in NL.

**cna**



# OARI: The Future Starts Here

## We've Got **You Covered**

- Powering local industry and community competitiveness
- Supporting digital maturity and growth in the province
- Leveraging 600+ expert faculty, students, and graduates in support of innovation
- Accessing Labs and Innovation Centers
- Meeting real and evolving industry needs







**REALITY CAPTURE  
AND DIGITIZATION**

Technology Access Centre

**Tech Access Canada** brings together a network of 67 nationally recognized innovation hubs or TACs each affiliated with a public college or Cégep.

## Tech-Access Canada

TACs offer SMEs access to advanced technology, equipment, and expert teams to enhance efficiency and problem-solving.

**promote  
technology  
awareness**

**foster  
technology  
adoption**

**mitigate  
financial  
risk of R&D**

# RCD TAC Equipment



ASTRALiTE Edge



ExynAreo



Elios 3



HySpex Mjolnir



Matrice 600



Zeb Horizon



DJI Phantom  
4 RTK



ExynPak



HandySCAN  
3D Black



Leica BLK360 G2



Vidoc RTK

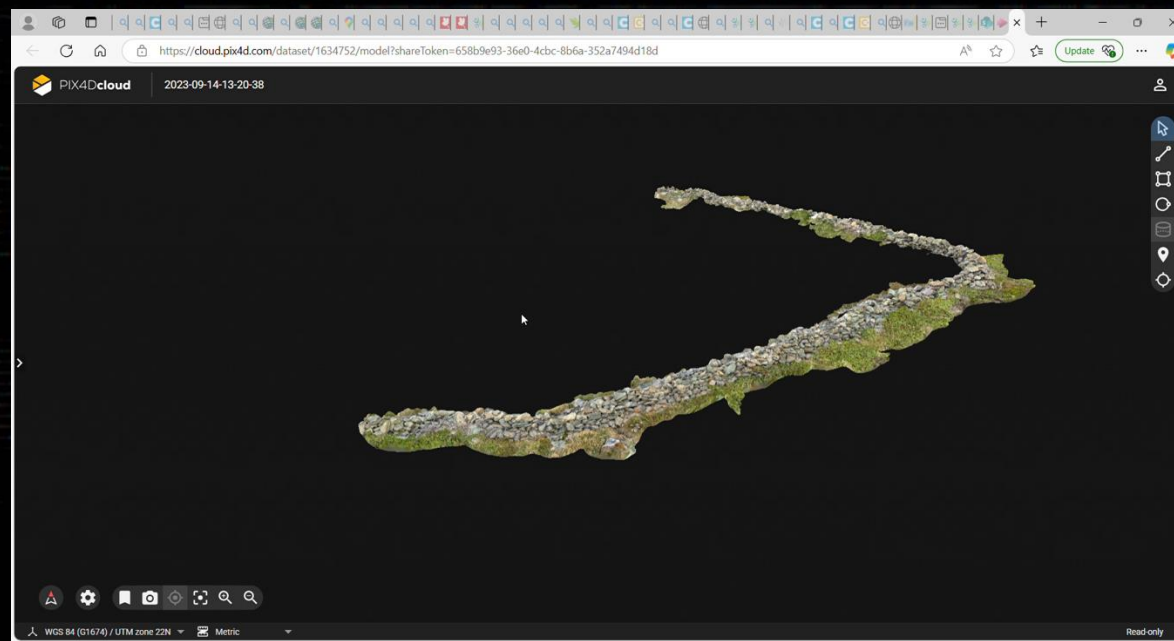
Zeb Pano  
Zeb Cradle Mount  
Zeb Car Mount  
Zeb Backpack  
Mount  
Zeb Vision  
RGB Camera



# Our Lady of Mercy Church, Port au Port, NL



# Grates Cove Rock Walls, National Historic Site





# Fogo Island Heritage Properties

Search & Filters


Settings

Registered Heritage Structure

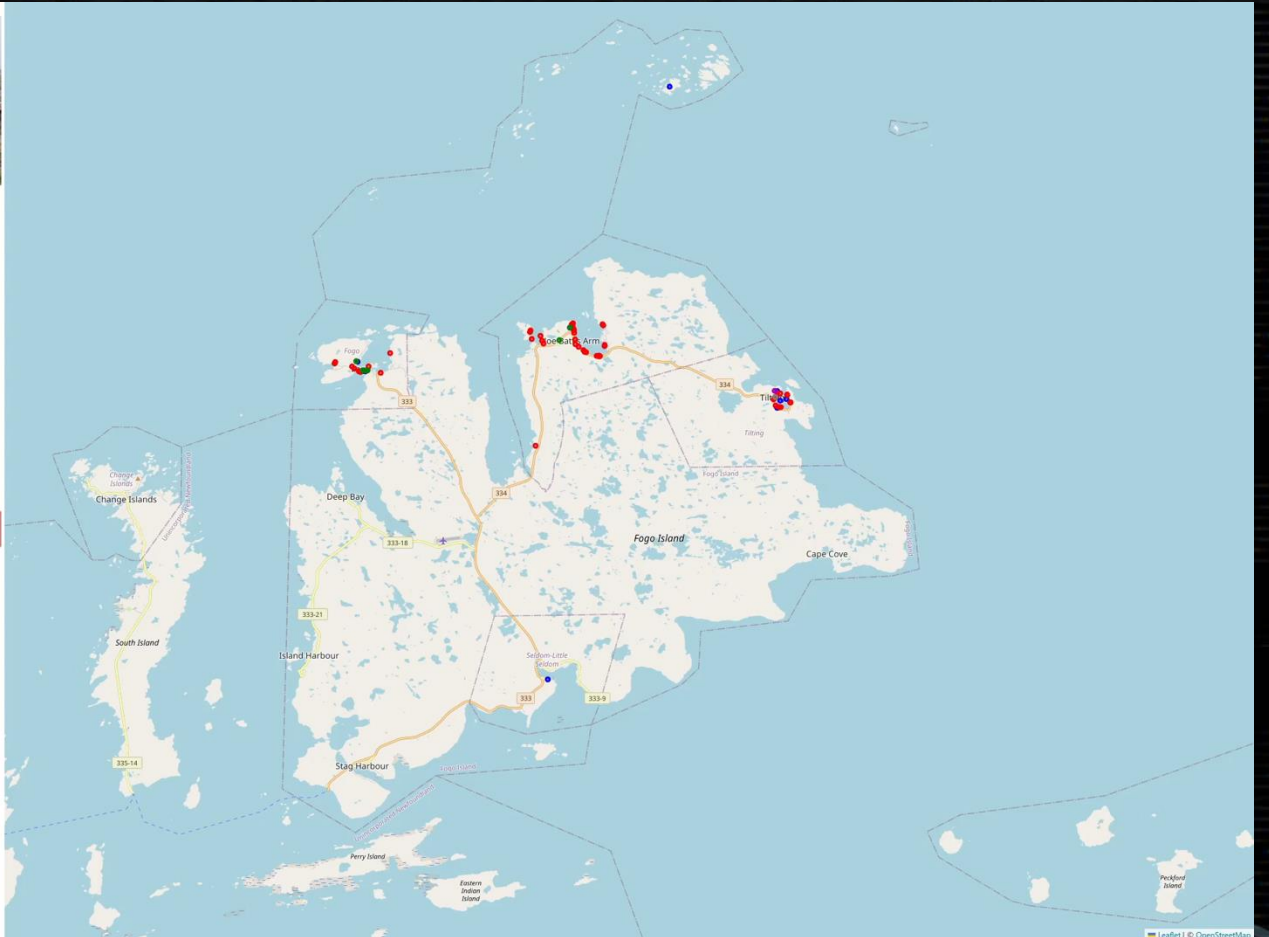
Fisheries Heritage Preservation Program

Municipal Heritage Building Structure or Land

Registered Heritage District

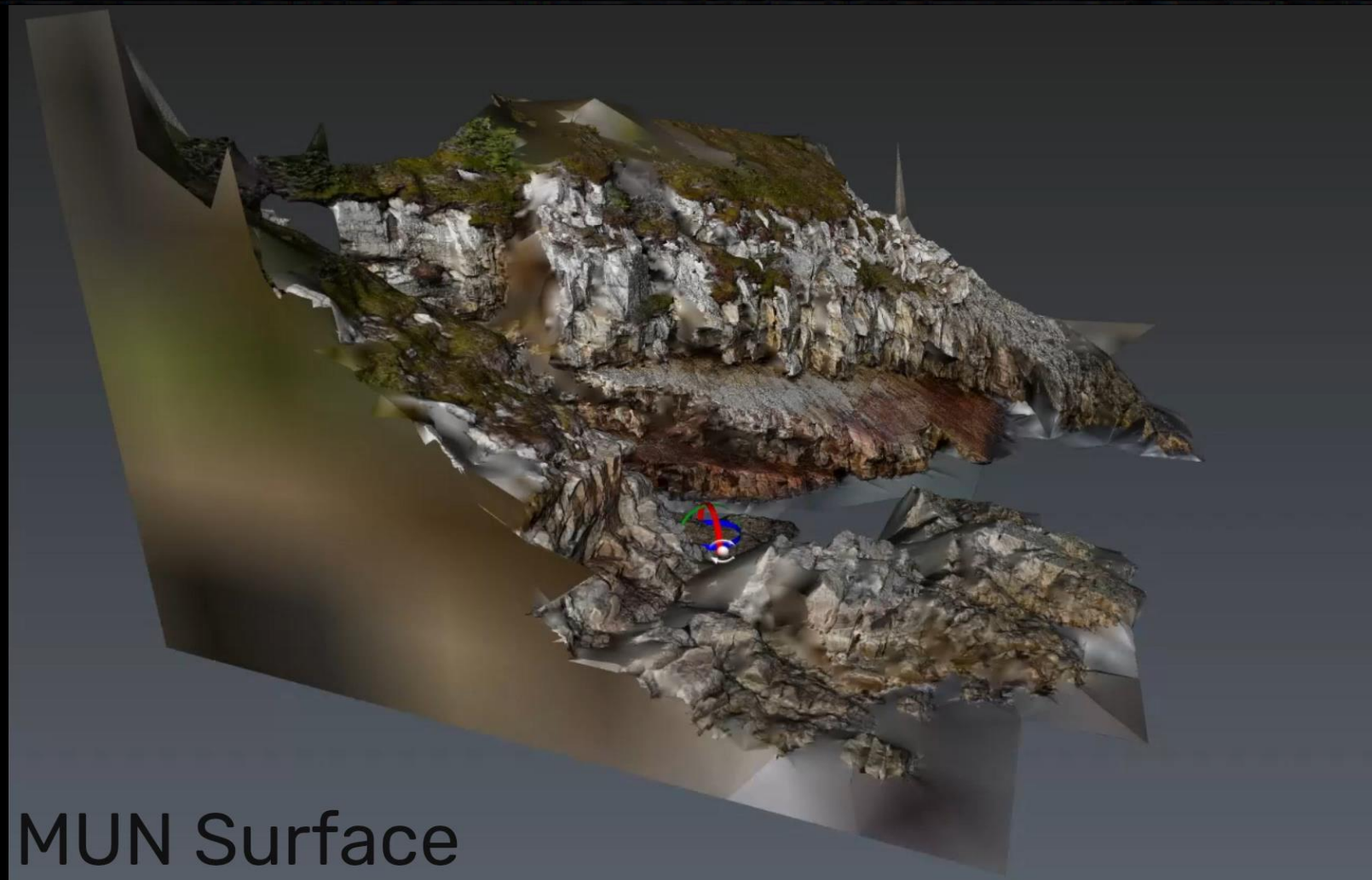


**Building Name:** Leo Broders Twine Store  
**Building Type:** Fisheries Heritage Preservation Program  
**Community:** Tilting  
**Address:**  
**Year of Construction:** 1905  
**Builder:** Leo Broders  
**Notes:** This building was built by Leo Broders to hold his fishing gear and supplies. It was originally a full 2 storey structure but the top section was removed by Mr. Broders in the early 1960s.  
**All information sourced from Heritage NL**  
[More Information at heritagennl.ca](https://heritagenl.ca)



# Coastal erosion monitoring

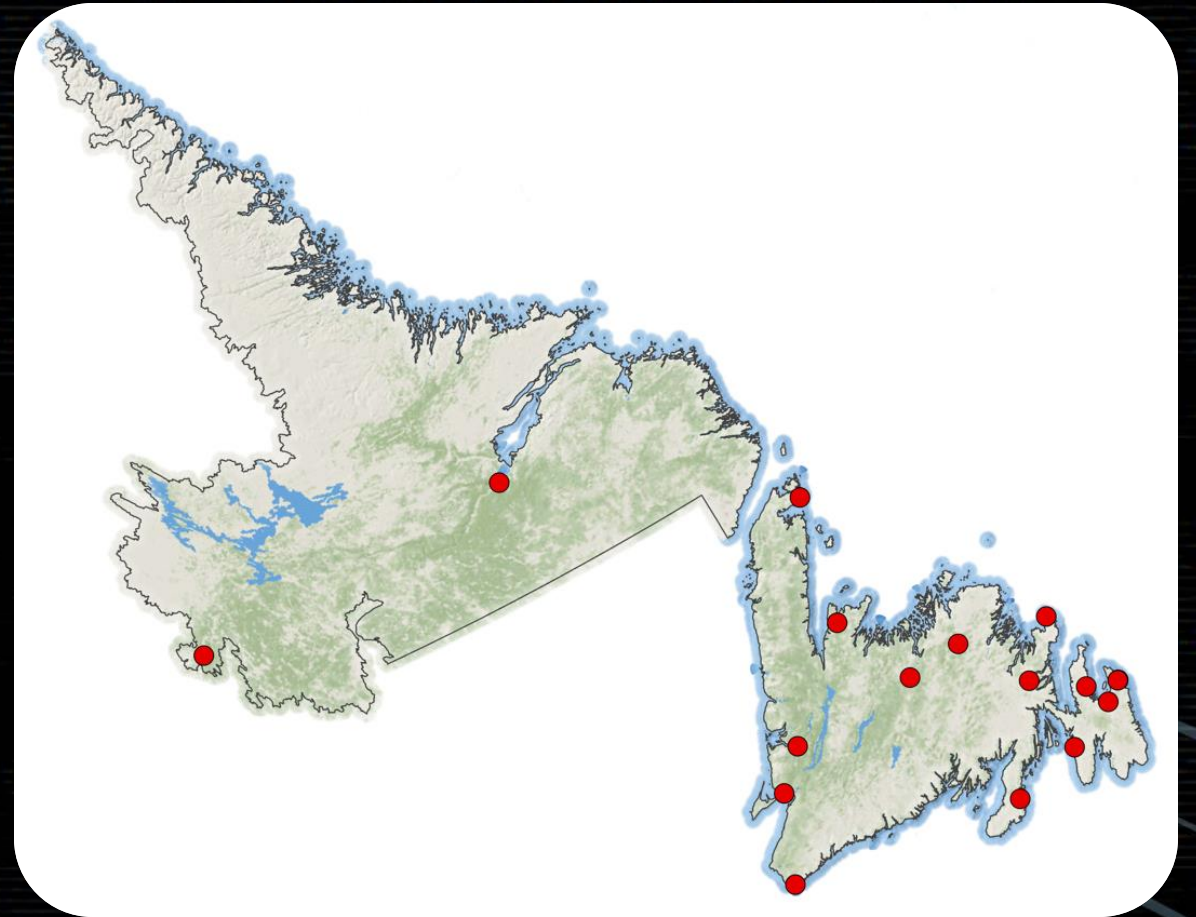
UNESCO  
Bonavista  
Geopark





## CNA campuses

- **17** campuses province-wide
- Customized and Continuous Learning
- Work Integrated learning
  - Work-term and capstone students
  - Internship students





# Ready to Upgrade? Contact Us.



**Heather Ward**

Director - RCD TAC  
heather.ward@cna.nl.ca

**Website**

[www.cna.nl.ca/research-and-innovation/rcdtac/](http://www.cna.nl.ca/research-and-innovation/rcdtac/)





The logo for CNA, consisting of the lowercase letters 'cna' in a bold, black, sans-serif font, enclosed within a white square.

**cna**

「  
REALITY CAPTURE  
AND DIGITIZATION  
」

Technology Access Centre

**THANK YOU!**