



**EASTERN REGIONAL  
SERVICE BOARD**

# **ERSB AND THE REGIONAL SERVICE BOARD MODEL**

*We're here to help. Contact us:*

255 Majors Path, Suite 3, St. John's, NL, A1A 0L5

Tel: 709-579-7960 / 877-878-2166

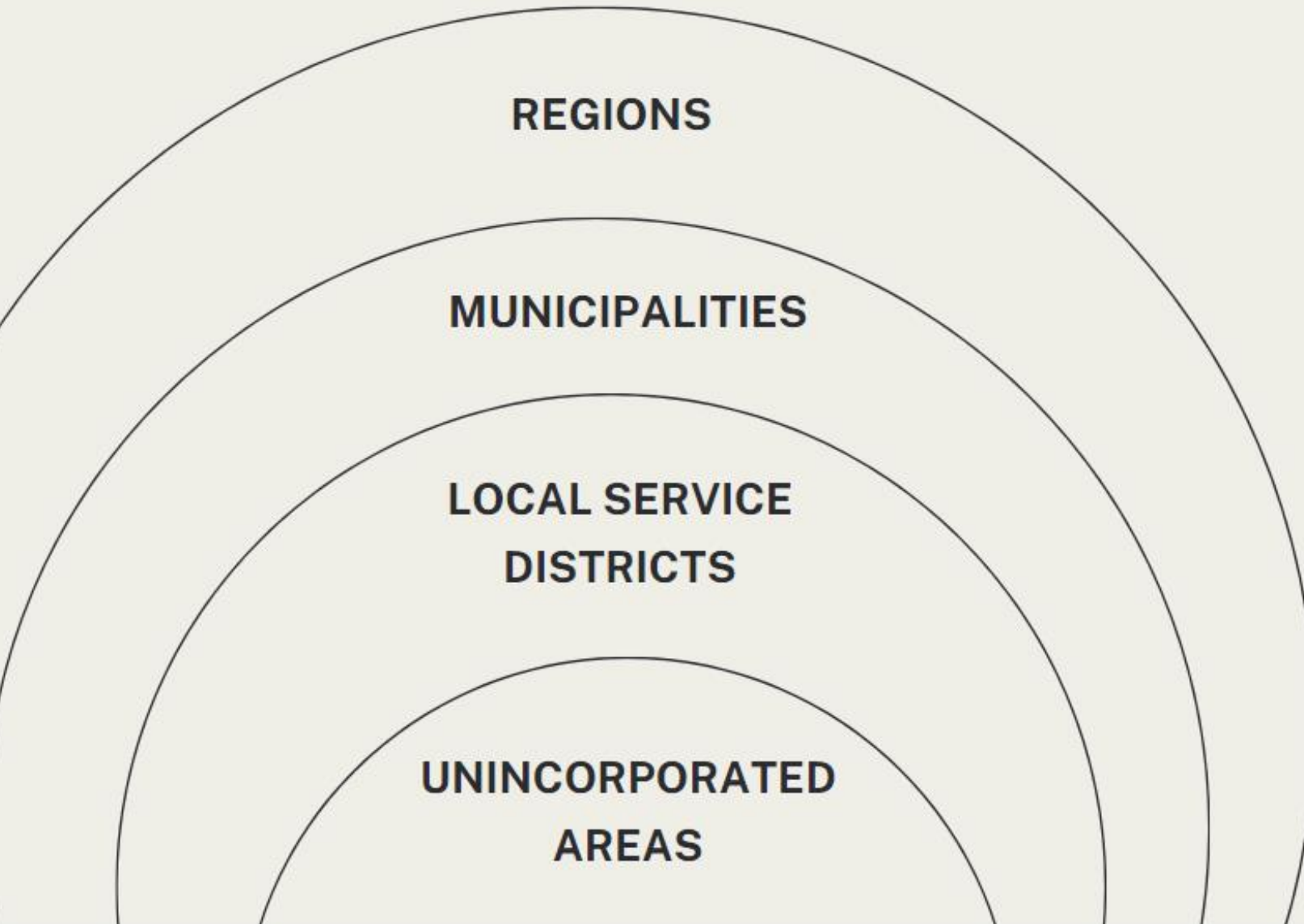
Email: [info@ersbni.ca](mailto:info@ersbni.ca)

Web. [www.easternregionalserviceboard.com](http://www.easternregionalserviceboard.com)

X: [@ersbni](https://twitter.com/ersbni)

# INTRODUCTION: UNITY IN DIVERSITY

---





# DEFINITION OF REGIONAL SERVICE BOARDS

---

- Form of regional governance operating for benefit of region.
- Promotes efficiency, cost-effectiveness and collaboration in delivery of services.
- Services provided reflect the needs of the communities and region.
- Created in 2012 by Province under authority of the Regional Service Boards Act, 2012.
- RSB's in Eastern, Western, Central, Burin and Northern Peninsula.
- First objective waste management.
- Extending fire protection coverage to unincorporated areas.
- Building local capacity for water and wastewater.

# RELATIONSHIP WITH GOVERNMENT

---

- Municipal and Provincial Affairs administers Regional Service Boards Act.
- Environment and Climate Change administers Environmental Protection Act. Primary point of contact on matters of waste management.
- Fire Commissioner (Justice and Public Safety) advises MPA on requests collect fire fees.
- Digital Government and Service NL and Fisheries, Forestry and Agriculture carry out inspections and enforcements on behalf of ECC.
- Transport. and Infrastructure on matters related to infrastructure funding for communities.
- MMSB develops waste management programs and is responsible for public education.



# KEY COMPONENTS OF REGIONAL SERVICE BOARDS

---

- **Coordinates services** across multiple communities avoiding duplication of efforts and resources.
- **Shares services and expertise** by pooling resources among participating communities, achieving economies of scale and reduce overall costs.
- **Efficiency and cost savings** makes service delivery more sustainable for participating communities.
- **Community engagement** ensures services provided align with the needs of residents in the region.
- **Governance structure** representative of participating communities ensures decision-making is collaborative and representative of the region.

# OVERVIEW OF THE ERSB

---

- ERSB Board of Directors representative of region
- Largest of the 5 RSB's in NL
- Formerly operated as Eastern Waste
- 2012 Provincial Solid Waste Management Strategy Mandate
  - Core goals:
    - 1) Advance the implementation of modern waste management practices
    - 2) Divert materials from disposal in the landfill;
    - 3) Close the 42 community landfills that operated in the region.
- A review of the strategy was completed in 2019.

# ERSB'S STRETEGIC PILLARS

---

- Service Delivery
- Regional Leadership
- Fiscal Responsibility and Customer Service
- Good Governance
- Environmental Stewardship



# ERSB'S PROGRAMS AND SERVICES

---

- Curbside weekly garbage collection
- Curbside biweekly recycling collection
- Seasonal bulk waste collection
- Extended fire protection service
- Water and Wastewater Operator Program
- Operates 10 Waste Recovery Facilities for residential users
- Operates Clarendville Transfer Station for commercial users
- Seasonal HHW collection events
- Seasonal community clean-ups
- Admin support for fee collections





SWANA  
SOLID WASTE TRANSFER STATIONS  
A COMMITMENT TO EXCELLENCE

Eastern Regional  
Service Board

2016  
Silver Excellence Award  
Transfer Station





VARDY'S  
CONTAINER RENTAL

800-888-4321  
402-110

Vardy's



























BAY de GRAVE



36-32

# Household Hazardous Waste Collection Site



EASTERN REGIONAL  
SERVICE BOARD

SOLID WASTE | WATER | WASTE WATER







***We're here to help. Contact us:***

255 Majors Path, Suite 3, St. John's, NL, A1A 0L5

Tel: 709-579-7960 / 877-878-2166

Email: [info@ersbnl.ca](mailto:info@ersbnl.ca)

Web. [www.easternregionalserviceboard.com](http://www.easternregionalserviceboard.com)

X: @ersbnl

