



MNL

Central Regional Meeting
March 22nd & 23rd, 2024
Grand Falls - Windsor



AGENDA

1. Role of Regional Service Boards (RSB)
2. Central Regional Service Board (CRSB)
 - Overview of current programs & services.
3. Vision for Central Regional Service Board in the future from the perspective of waste management.
4. Q & A



Regional Service Board (Act)

- An Act respecting Regional Service Boards



Objectives of RSB

- A. Provides for creation of Regional Service Boards throughout the Province for the purpose of providing regional services such as solid waste collections & disposal, waste water systems, etc.
- B. Provides for formal arrangements for sharing of services that are enforceable under legislation. Other services may include:

Regional:

- Water Supply
- Sewage Disposal
- Police Services
- Ambulance Services
- Fire Protection

- Public Transportation
- Recreational Facilities
- Animal & Dog Control
- And Charge Fees for Services



- Cabinet, by order, can create a RSB, designate its boundaries and services to be provided.
- Board members will be selected (appointed) from amongst councillors in the region.
- Cabinet appoints the chairperson.
- Municipal and Provincial Affairs (MAPA) can provide a full presentation on RSB.
- Google for more detailed information.



- Central Regional Service Board (CRSB)
- Central Newfoundland Waste Management (CNWM)
- Provincial Waste Management Strategy
 - Eliminate open burning and incineration.
 - Reduce the number of waste disposal sites.
 - Phase out all unlined landfill sites.
 - Divert 50% of material going to disposal.
 - Full province wide waste management strategy.



- The Central Regional Service Board (the Board) was established in 2008 and is governed under the Provincial *Regional Service Boards Act* 2012 (revised 2019). The Board's power includes the construction and operation of the Regional Solid Waste disposal site and seven local Waste Management Facilities. It is empowered to set and charge user fees to municipal authorities, local service districts, unincorporated areas benefited by a regional facility and other entities as required.



Board Boundaries

- CRSB boundaries, as established under the RSB Act 2012, revised 2019, are from Terra Nova National Park (park included) in the East, Buchans in the West and Fogo Island/Twillingate in the North.

Board Boundaries

Regional Site

Route 3-1-09

Norris Arm North Access Road

Ward 1 -Buchans Area

Ward 2 -Point Leamington Area

Ward 3 -New World Island/Twillingate

Ward 4 -Fogo Island

Ward 5 -Gander Bay

Ward 6 -Indian Bay

Ward 7 -Terra Nova

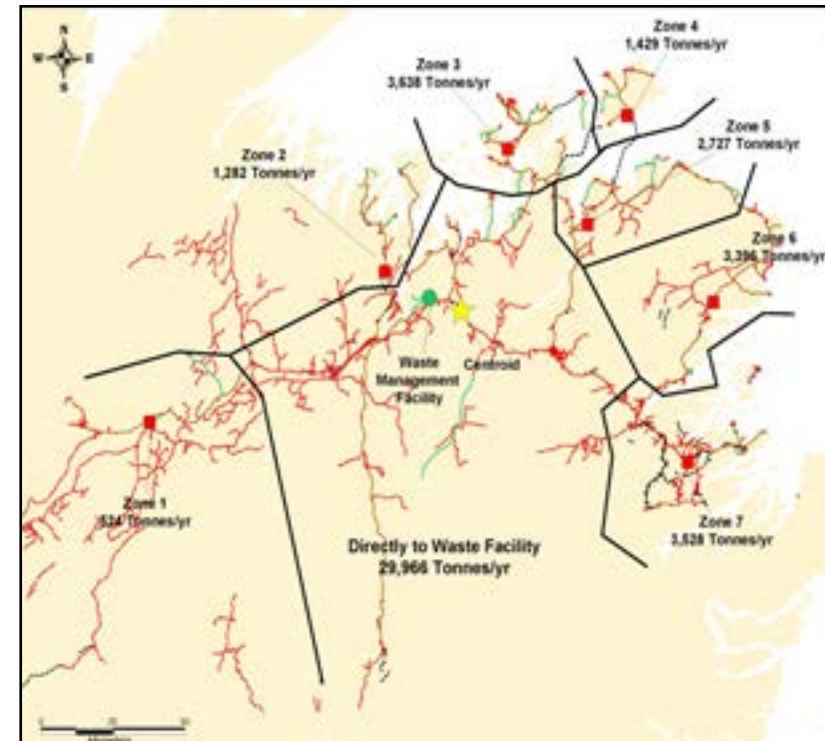
Ward 8 -Gander

Ward 9 – Grand Falls Windsor

Ward 10-Bishops Falls, Botwood & Lewisporte

Ward 11-Norris Arm North & South

Ward 12-Direct Haul





Population

- The total population served by CRSB is approximately
- 32,200 households
- 72,500 residents
- 3,000 businesses



Board Members

Name	Ward	Position	Address
Robert Elliott		Chairperson	Point Leamington
Mark Hiscock	1 – Buchans Junction	Director	Buchans
Keith Humber	2 - Point Leamington	Director	Peterview
Woodrow Gidge	3 – NWI/Twillingate	Director	Fairbanks
Alexander Crawford	4 – Fogo Island	Treasurer	Fogo Island
Keith Howell	5 – Gander Bay	Director	Carmanville
Triffie Parsons	6 – Indian Bay	Director	C.W. T.
Glen Arnold	7- Terra Nova	Vice – Chair	Sandringham
Percy Farwell	8 - Town of Gander	Secretary	Gander
Bob Hiscock	9 – Town of GFW	Director	GFW
James Sceviour	10- Botwood/Bishops Falls/Lewisporte	Director	Botwood
Alethea Thompson	11- Norris Arm North/Norris Arm South	Director	Norris Arm North
Vacant	12- Direct Haul		



Overview of Current Programs/Services

- Collection Services
 - CRSB has 13 split stream collection Trucks
 - Collection for Communities 62/99
 - 18,500 Households
 - Expansion





Water/Waste Water Pilot Project

- CRSB has partnered with The Province:
 1. Oversee the regular operations and maintenance of public drinking water and waste/water systems and provide recommendations for improvements.
 2. Development and implementation of operational monitoring programs.
- In Central; eleven (11) towns and eleven (11) Local Service Districts have been identified to participate in the project. These 22 communities are located in six (6) clusters in Central Newfoundland.



Disposal Services

- Seven (7) Transfer Stations
- Regional Waste Management Site In Central





2nd Generation Engineered Lined Landfill

50 Year lifespan



Cell #3 Engineered Lined Landfill





Leachate Control Facility

- **Leachate Control Building, Lagoons, and Engineered Wetland**





Diversion Programs

Tire Program

- **2023**

• Ward 1	Buchan's Jct.	397
• Ward 2	Pt. Leamington	821
• Ward 3	NWI/Twillingate	1156
• Ward 4	Fogo Island	120
• Ward 5	Gander Bay	310
• Ward 6	Indian Bay	346
• Ward 7	Terra Nova	1649
• Regional Site		<u>4496</u>
•	Total	9295

•

- **2022**

• Ward 1	Buchan's Jct.	0
• Ward 2	Pt. Leamington	200
• Ward 3	NWI/Twillingate	1738
• Ward 4	Fogo Island	0
• Ward 5	Gander Bay	30
• Ward 6	Indian Bay	609
• Ward 7	Terra Nova	847
• Regional Site		<u>2410</u>
•	Total	5834



Metals

Year	Tonnage Collected
2023	770 Metric Tonne
2022	810 Metric Tonne
2021	687 Metric Tonne
2020	910 Metric Tonne



Paint Waste – Product Care

- **In 2023 CRSB Shipped out:**
 - **81 Tub skids of waste paint (28.35 MT)**
 -
- **In 2022 CRSB shipped out:**
 - **69 Tub skids of waste paint (24.15 Tonnes)**
 -
 -
- **In 2021 CRSB Shipped Out:**
 - **87 Tub skids of waste Paint.**
 -
 -
- **Estimated weight @350 kg each = 35.35 Tonnes**



Electronic Waste

EPRA

E – Waste

In 2023 CRSB shipped out:

- 78 pallets

In 2022 CRSB shipped out:

- 162 pallets
- 2 E-Bags

In 2021 CRSB shipped out:

- 173 Pallets types (monitors)
- 2 E-Bags (mixed E-Waste)

In 2020 CRSB Shipped Out:

- 146 Pallets types (monitors/Tv)
- 7 E – Bags Mixed E-Waste





Household Hazardous Waste

		2020	2021	2022	2023
Product	Class	Amount	Amount	Amount	Amount
Waste Batteries	Class 8	3 Drums	11 Drums	7 Drums	1 Drum
Waste Pesticides	Class (6.1)	1 Drum	24 Drums	4 Drums	2 Drums
Waste Flammable Liquid	Class 3	41 Drums	23 Drums	16 Drums	2 Drums 5 Drums
Waste Corrosive Liquids	Class 8	3 Drums	3 Drums	3 Drums	2 Drums
Aerosols Flammable	Class (2.1)	26 Drums	22 Drums	21 Drums	12 Drums
Propane	Class (2.1)	24 Drums	54 Drums	17 Drums	10 Drums
Oil Filters		0 Drums	7 Drums	3 Drums	2 Drums
Oxidizing Liq	Class (5.1)	0 Drums	3 Drums	1 Drum	0
Non-Regulated Waste Anti-Freeze		0	2 Drums	2 Drums	0
Glycol		0	3 Drums	3 Drums	2 Drums
Crushed Bulbs					3 Drums



Waste Oil - UOMA

Norris Arm	Regional Site	12,900	Liters
Ward 1	Buchans Junction	900	Liters
Ward 2	Point Leamington	0	Liters
Ward 3	NWI/Twillingate	2,000	Liters
Ward 4	Fogo Island	0	Liters
Ward 5	Gander Bay	2,000	Liters
Ward 6	Indian Bay	1,000	Liters
Ward 7	Terra Nova	1,004	Liters
	TOTAL	19,804	Liters



Asbestos Waste

• 2023	160.02	Tonnes
• 2022	171.71	Tonnes
• 2021	256.02	Tonnes
• 2020	158.80	Tonnes
• 2019	69.17	Tonnes
• 2018	134.87	Tonnes
• 2017	24.50	Tonnes
• 2016	88.24	Tonnes
• 2015	192.12	Tonnes



Material Recovery Facility MRF











Date	Occ	M/P	Aluminum	Poly C	HDPE	Tin/Steel	Lids/Tubs	Mixed Pet	Total
Jan	107.31	80.76			20.88			58.04	266.99
Feb	106.97	134.88				54.00			295.85
Mar	97.07	54.13	19.21			54.09			224.50
April	174.53	54.23							228.76
May	107.44	53.86		27.05					188.35
June	132.31	79.57							211.88
July	80.36	53.24							133.60
Aug	186.54	79.75		27.05					293.34
Sept	134.09	80.26							214.35
Oct	133.64	26.74							160.38
Nov	107.10	106.94			42.75				256.79
Dec	133.83	53.55							187.38
TOTAL	1,501.19	857.91	19.21	54.10	63.63	108.09	0.00	58.04	2,662.17

MRF Year End Totals 2023

Material Types	Tonnage	Percent
OCC	1,501.19	45.84%
Mixed Paper	857.91	26.20%
PET	58.04	1.77%
HDPE	63.63	1.94%
Tubs/Lids	0.00	
Aluminum	19.21	.59%
Steel	108.09	3.30%
Poly C	54.10	1.65%
Reject	612.63	18.70%
TOTAL	3,274.80	100%

[Central Newfoundland Curbside Waste Audit 2022.pdf](#)



Future Visions CRSB

- Maximize the recycling opportunities.
- Reduce contamination in both blue and clear bag:
 - Extended producers responsibility
 - Packaging and printed paper (PPP) 0.5m-1.5m

Coast of Bays

BVGB

Population – 6600

Population – 12,500

Households – 2800

Households -- 5600

- Everyone to have the same level of service.
- Everyone pay the same fee for collection and disposal.
- A strategy for composting at a provincial level.



- **Central Newfoundland Waste Management**
 - P. O. Box 254, Norris Arm, NL, A0G 3M0
 - Phone: 709 653 2900
 - Fax :709 653 2920
- Web: www.cnwmc.com E-mail: Info@cnwmc.com

Thank you

