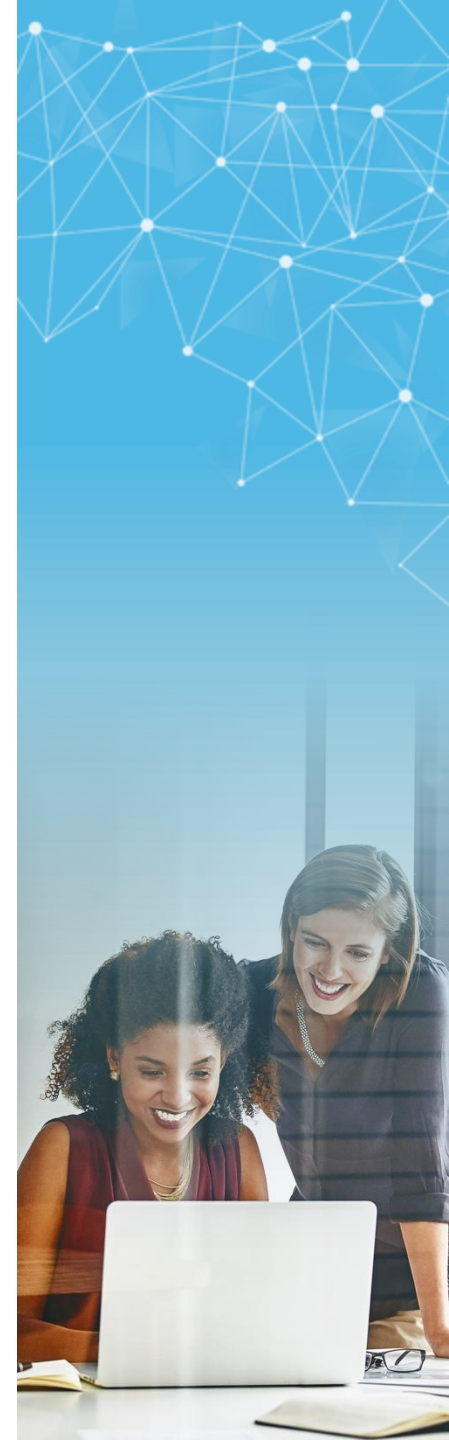


# Municipality

Send us your innovation challenge at  
<https://discover.mitacs.ca/municipality-support>

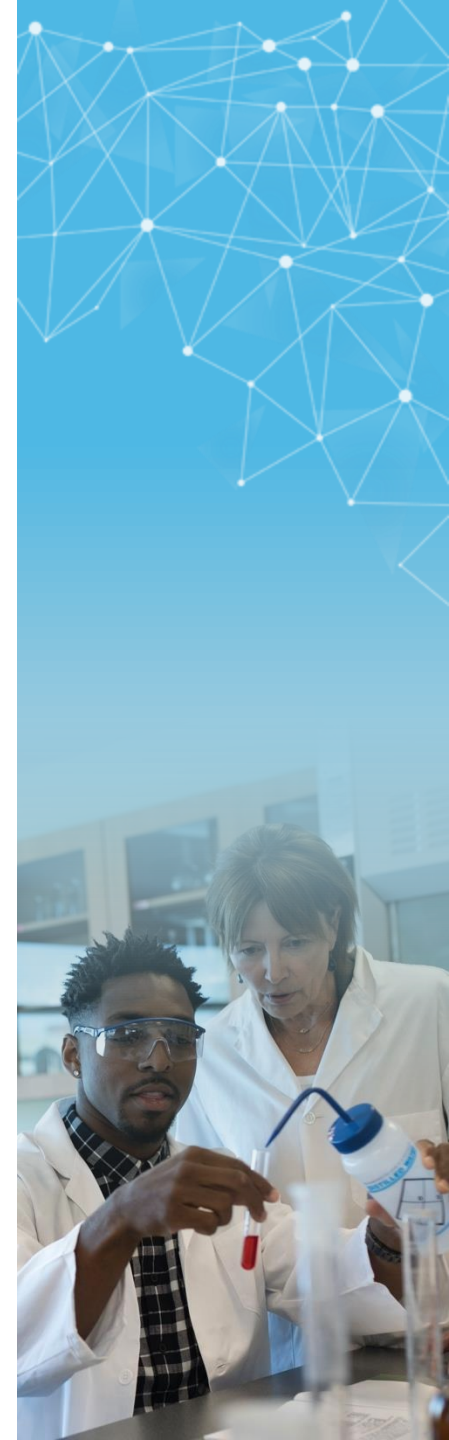
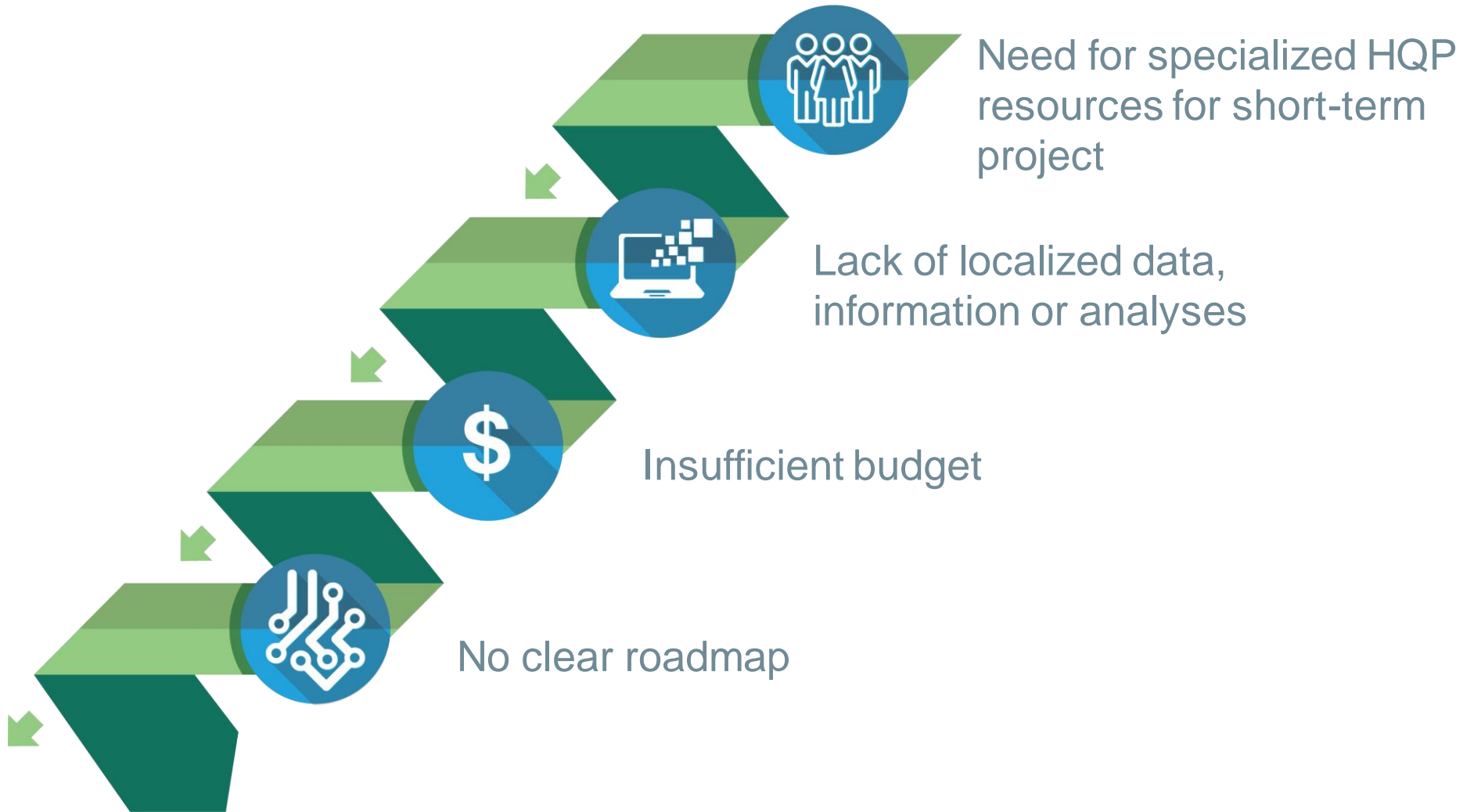
# Municipalities are Key Innovators

- Our communities are the ultimate recipients of innovation.
- Municipalities connect science/innovation to communities.
- During the 2020-21 first Mitacs call with municipalities,
  - **60 projects were submitted to Mitacs by 50 municipalities.**
  - **>50% focused on sustainability and/or environment.**
- We have an open call for projects with municipalities.
  - **Tell us your innovation needs!**





# What slows down your innovation?



# Mitacs: Connect to Funding & Expertise

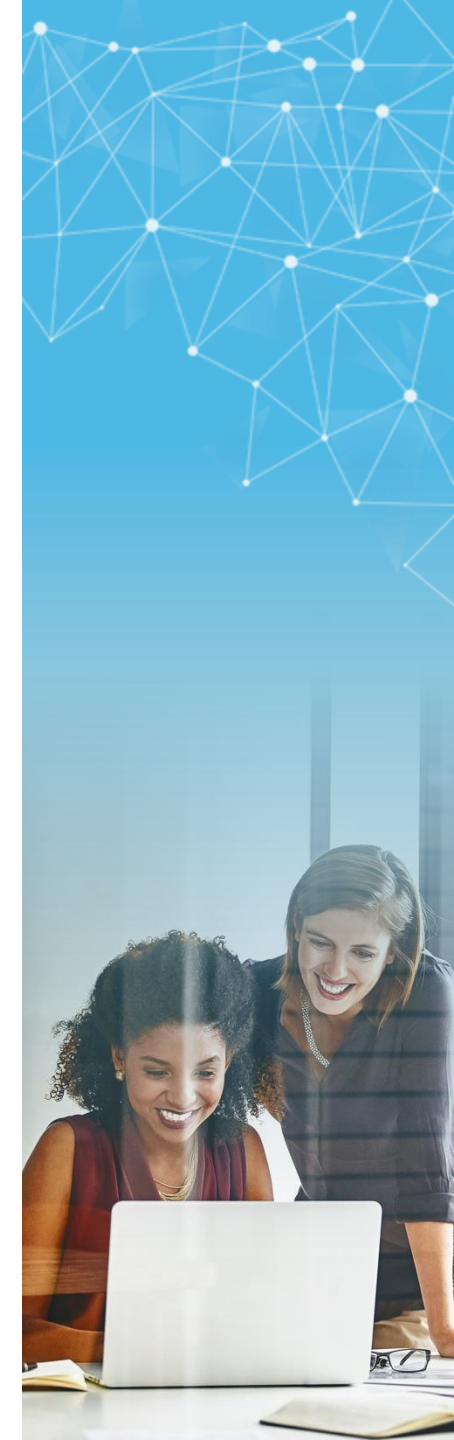
Mitacs is an independent,  
not-for-profit organization that  
fosters global growth and innovation  
\$708 M/5 year budget

**20+ years** in operation



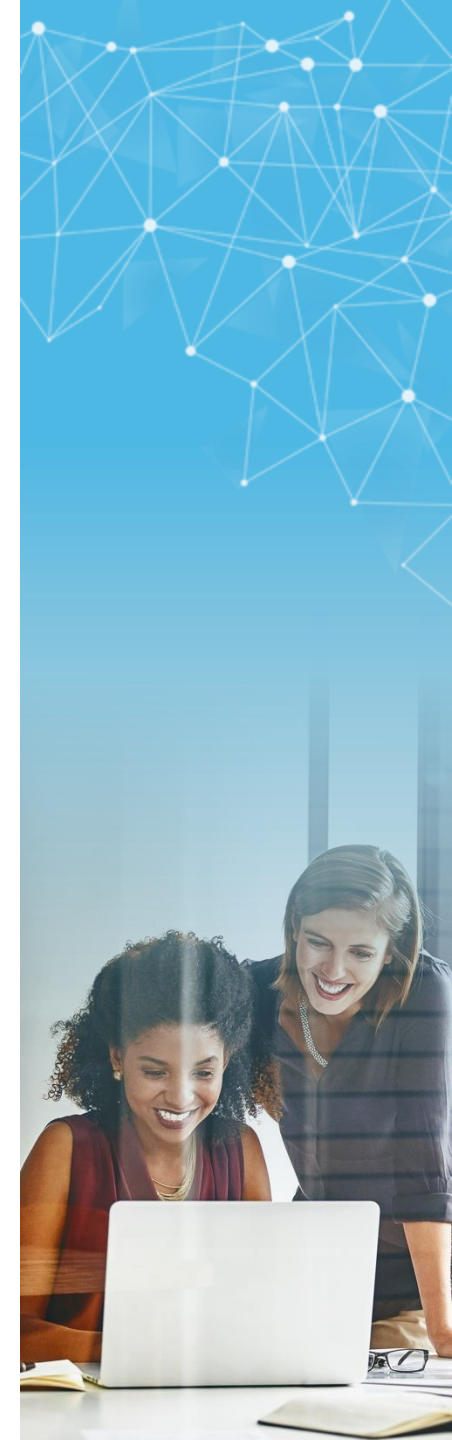
**40,000+**  
research and  
innovation projects

**200+** staff, **30+** offices, **4** regional hubs:  
Vancouver | Toronto | Montréal | Ottawa



# How Mitacs can Help

- Connect you to expertise – get you a team!
  - From colleges to universities
  - **Highly qualified personnel spend 50% of their time with you**
- We provide **50% of the funding** you need
- Help you roadmap and plan your project
- Help pool your resources
  - Connect with other municipalities/players with similar needs

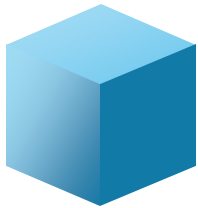


# Mitacs Model – Research Team Internships

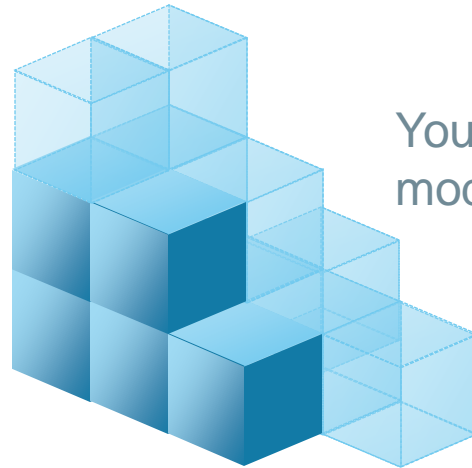


The researcher divides their time evenly between Post Secondary Institutions and the municipality.

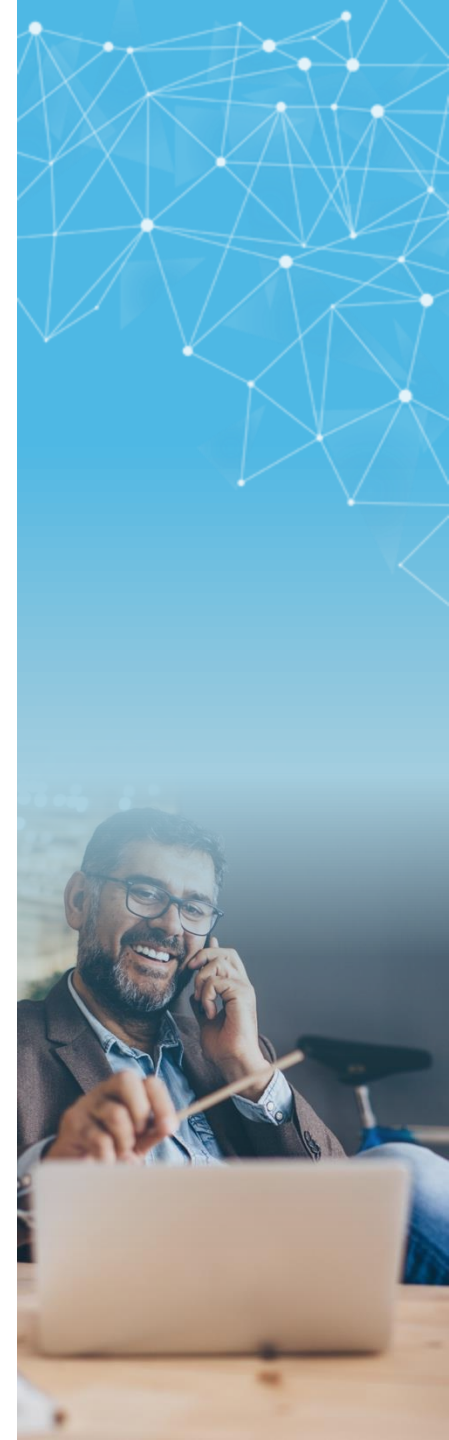
\$5000 - \$7500  
Add Mitacs! ...  
**\$10-\$15k**



A research spends a minimum of 4-to-6 months — or **one module** — on a project.

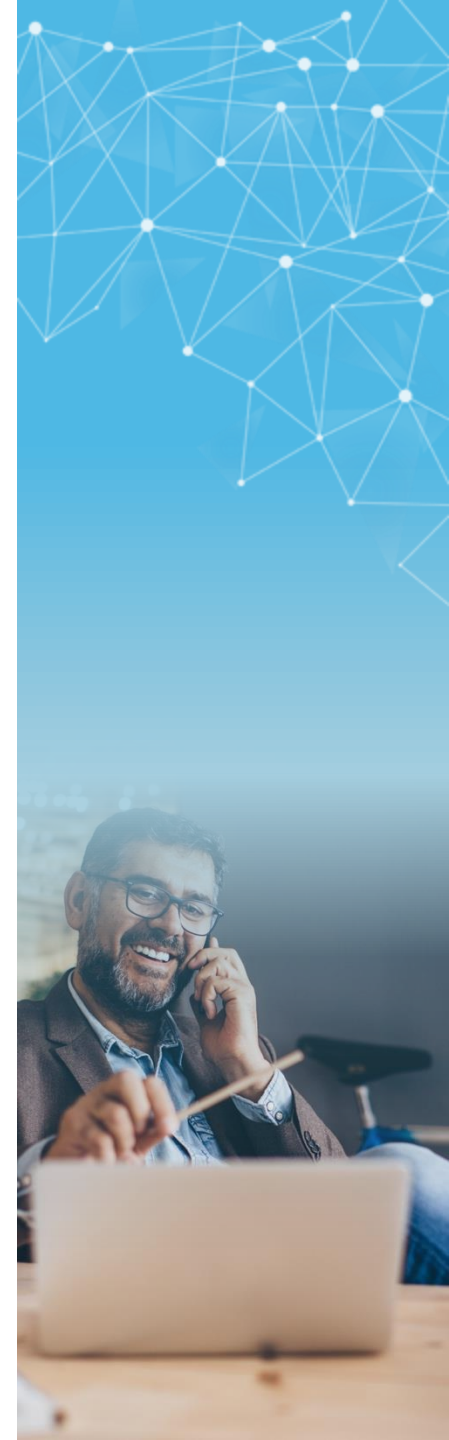


You can have as many modules as you need.



# Areas of Expertise

- Business/economic development: small business, tourism, social enterprise
- Engineering, infrastructure and asset management
- Water, water, water! (watershed modeling)
- Waste management and green technology
- Re-purposing buildings, architecture
- Policy and planning (Grenfell's School of Science and the Environment)
- Commercial and residential development - guidelines



# Paving the way

## Collaborative asphalt project to improve roads in N.L.

### Research

Feb. 3, 2021

BY JACKIE LOCKE

A project led by Faculty of Engineering and Applied Science researchers aims to improve asphalt used in pavement in the province's capital.

A harsh, unique climate is largely to blame for the generally bumpy ride in St. John's.

Dr. Kamal Hossain, an adjunct professor in the Department of Civil





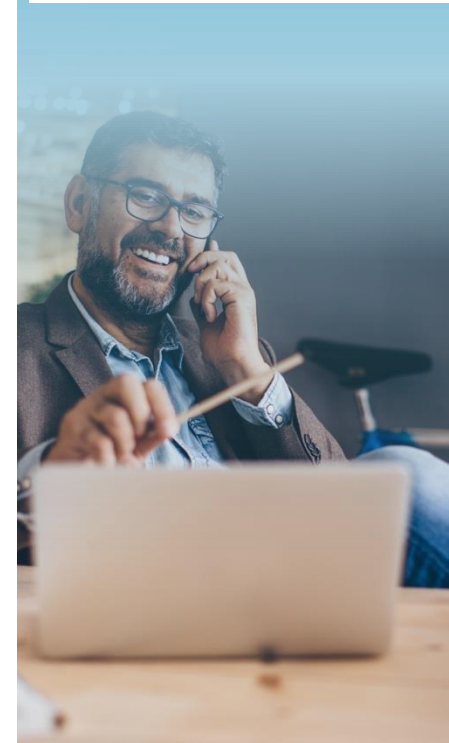
# Halifax: Threats to urban-forest sustainability in Halifax Regional Municipality

- **Challenge:** Get reliable information to HRM’s urban forestry staff for decision-making to enhance the sustainability of the city’s tree population.
- The researchers (2) are investigating the factors that contribute to poor health and mortality of new street trees, aiming to assist the urban forestry staff to alleviate these factors in future plantings. Another student will document the prevalence of hemlock trees in HRM’s six large wooded parks, aiming to assist urban forestry staff to determine whether actions will be needed to cope with the impending arrival of the insect pest known as the “hemlock woolly adelgid.”

**Expertise:** Environmental Sciences



# Montreal: Sustainable management of construction, renovation and demolition (CRD) waste



- **Challenge:** CRD waste which could be prevented or recycled is sent to landfill without utilization, resulting in environmental problems and waste of resources.
- CRD waste accounts for about 27% of all waste generated in Canada.. The aim of project is to provide the best management practices and policy recommendations for CRD waste management in Montreal West. The outcome of this study will be used for supporting the strategic planning of CRD waste management to achieve sustainable development in Montreal West. The city of Montreal West will be able to make an informed decision when updating its residual materials management strategy, taking into account the life cycle of CRD residues.

**Expertise:** Faculty of Civil, and Environmental Engineering



# Take home message

- **Municipalities are at the forefront of innovation**
- **All municipalities innovate, even without labelling it as such**
- Mitacs can support you in your innovation journey
  - Connect with talent
  - Funding
  - From small projects to major strategic initiatives
- **Send us your innovation challenge at <https://discover.mitacs.ca/municipality-support/>**



Thanks to **Prince Edward Island**

co-funding **Quebec**



**BRITISH COLUMBIA**  
**Labrador**



**QUESTIONS?**

Presenter

*Libby Carew*

[lcarew@mitacs.ca](mailto:lcarew@mitacs.ca)

709.725.2150