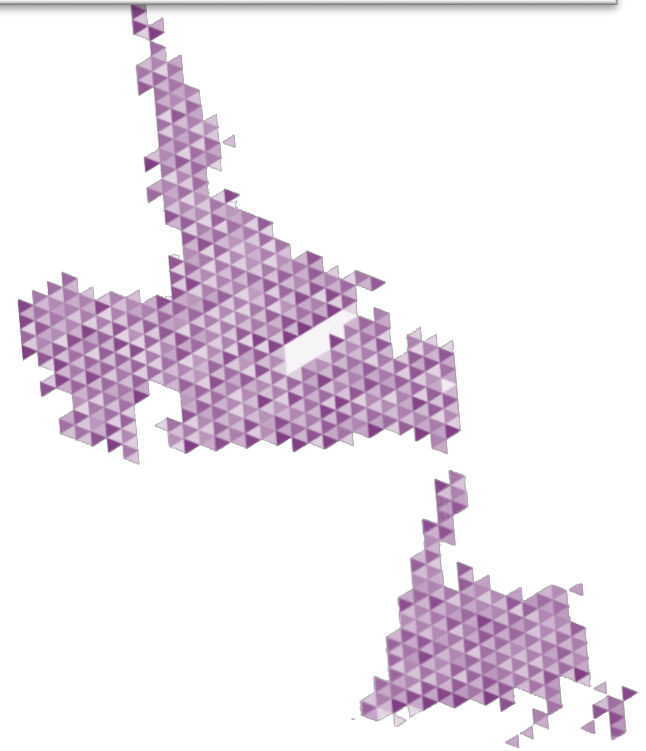


Municipal Engagement in Immigration: Opportunities for Communities

Department of Immigration, Population Growth and Skills
Government of Newfoundland and Labrador



Overview

- Mandate
- Trends in Immigration
- Provincial Immigration Pathways
- Opportunities for Municipalities to Support Immigration and Multiculturalism

Mandate

The Office of Immigration and Multiculturalism is a division in the Department of Immigration, Population Growth, and Skills, mandated with:



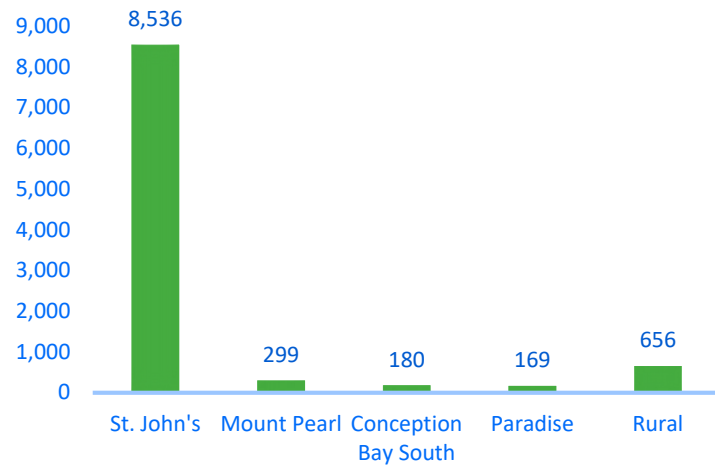
Immigration Trends: NL

- Immigration has grown approximately 60 per cent since 2017, from 1,190 to 1,850 (2019).
- Around one-third of all newcomers are settling in areas outside of St. John's/Northeast Avalon.
- Growth of cultural and religious communities in the province. Examples include:
 - Happy Valley-Goose Bay: Filipino community
 - Central NL: Muslim community
 - Western NL: Filipino community
 - Northeast Avalon: Nigerian community
- Client-service centered approach to immigration programs (Provincial Nominee Program, Atlantic Immigration Pilot, Priority Skills NL)

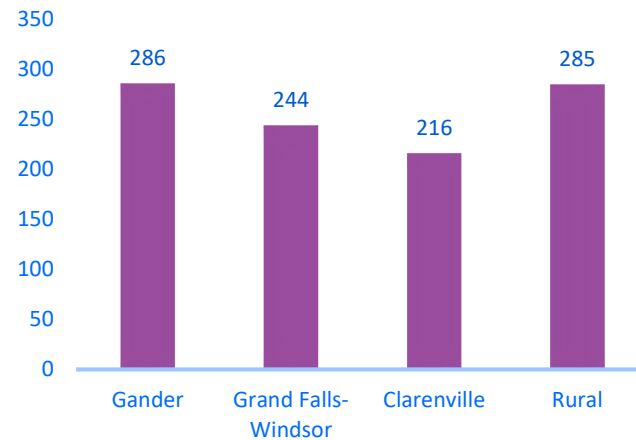


Permanent Resident Settlement by Region, 2005 to 2019

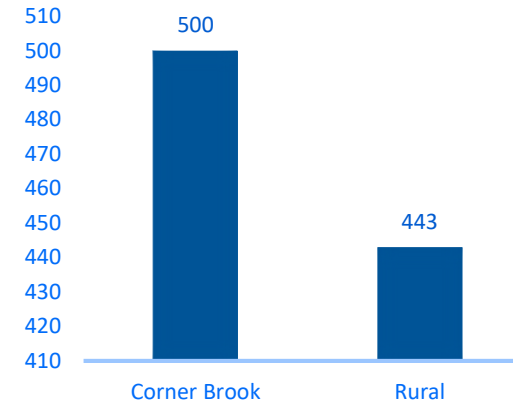
AVALON



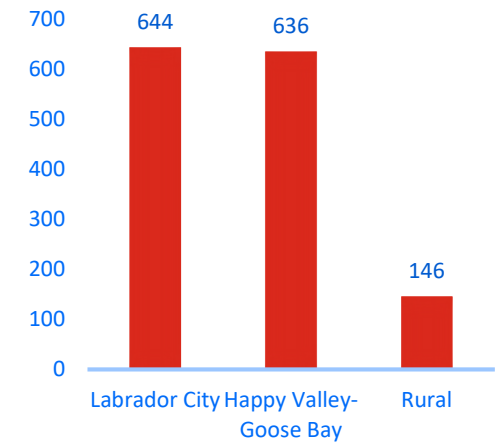
CENTRAL



WESTERN



LABRADOR



Communities are more diverse than ever before.

Provincial Immigration Pathways



- Immigration in NL is primarily due to economic immigration (newcomers who come to NL to address workforce shortages).



- Provincial immigration pathways provide opportunities for employers and communities in the province to increase immigration intake

- Provincial Nominee Program
 - International Entrepreneur and International Graduate Entrepreneur
 - Skilled worker streams
- Atlantic Immigration Program



Immigration Pathways

Newfoundland and Labrador Provincial Nominee Program (NLPNP)

- Express Entry-Skilled Worker
- Skilled Worker
- International Graduate
- International Entrepreneur
- International Graduate Entrepreneur
- Priority Skills NL

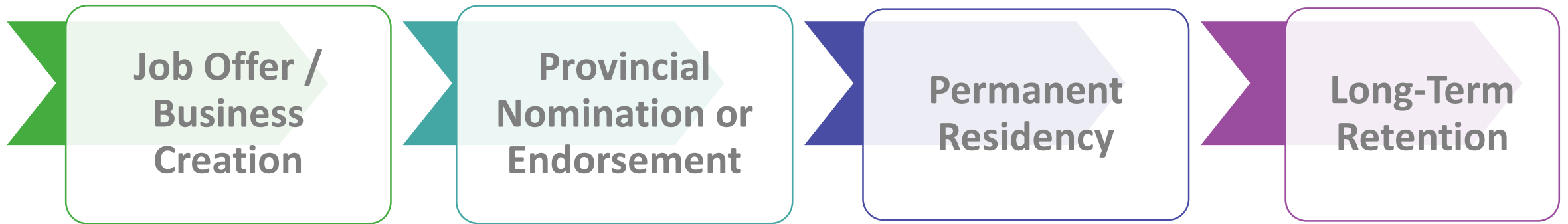


Atlantic Immigration Pilot Program (AIPP)

- Atlantic High-Skilled
- Atlantic Intermediate-Skilled
- Atlantic International Graduate



Immigrating to Newfoundland and Labrador – How It Works



Created by Anconer Design
from Noun Project



Created by Adrien Coquet
from Noun Project



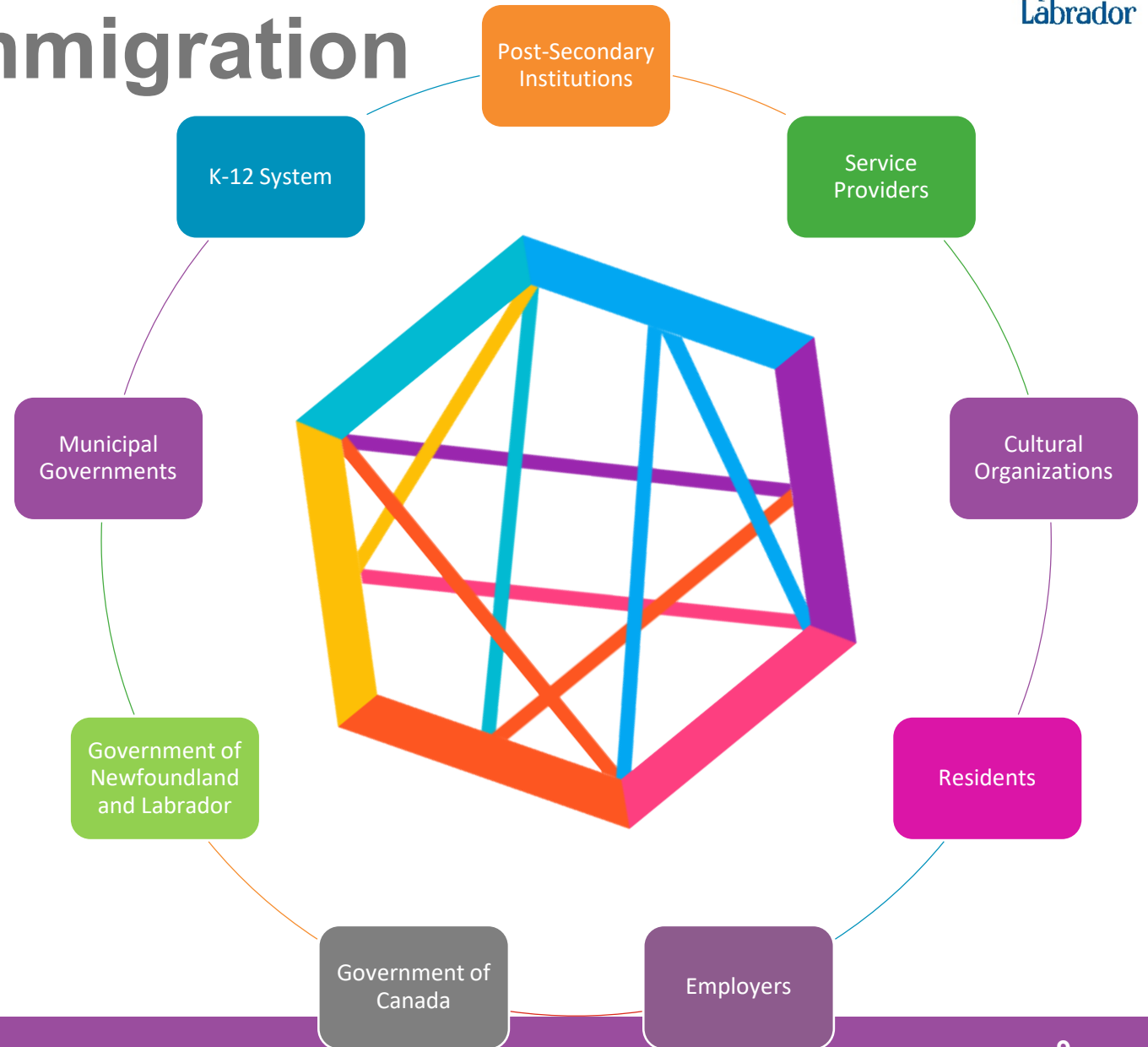
Created by Aldric Rodríguez
from Noun Project



Created by Aneque Ahmed
from Noun Project

Municipalities and Immigration

- Municipalities play a key role in newcomer settlement, integration, and retention
- Examples:
 - Carbonear – focus on reducing social isolation, connecting newcomers to community
 - Happy Valley Goose Bay – commitment to fostering immigration supports



Fostering Newcomer Supports in Municipalities

- Providing culturally appropriate and competent goods and services
 - E.g., grocery stores, libraries, schools, restaurants, frontline services, dietary considerations and public events
- Celebrating and commemorating holidays and events
 - E.g., broader community celebrations, outreach to cultural groups
- Embracing diversity for increased growth
 - E.g., working with cultural groups to grow communities; addressing social isolation; addressing religious and other needs
- Actively working to dismantle barriers to community inclusion
 - E.g., working groups and multi-stakeholder committees to address longstanding and emerging issues, including efforts to ensure diverse participation in municipal committee processes

Connect With Us

Office of Immigration and Multiculturalism (OIM)
Department of Immigration, Population Growth and Skills

Tel: 709-729-6607 / 709-729-7140

Email: immigration@gov.nl.ca / remzicej@gov.nl.ca

Website: <https://www.gov.nl.ca/immigration/>

