



TIRE PROGRAM PRICE GUIDE





TRUCKS

Drive

PRODUCT LINE	SIZE	LOAD RANGE	PRODUCT CODE	PRICE
XDS2	11R22.5	H	05359	\$ 596.05
XDS2	11R24.5	H	06613	\$ 612.95
XDS2	245/70 R 19.5	H	23134	\$ 450.57
XDN2	11R22.5	G	72805	\$ 578.91
XDN2	11R24.5	H	72129	\$ 607.51
X works XDY	11R22.5	H	89725	\$ 564.85
X works XDY	11R24.5	H	90022	\$ 577.20
XDY-EX2	11R24.5	H	23274	\$ 535.44
X Multi D	10R22.5	G	74441	\$ 495.33
X Works Z	11R22.5	H	15701	\$ 559.00



School Bus - Steer

PRODUCT LINE	SIZE	LOAD RANGE	PRODUCT CODE	PRICE
XZE	10 R 22.5	G	99141	\$ 477.95

Trailer

PRODUCT LINE	SIZE	LOAD RANGE	PRODUCT CODE	PRICE
XZE2	11R22.5	G	78390	\$ 528.42
XZE2	11R22.5	H	67042	\$ 551.20

OTR

Grader / Loader

PRODUCT LINE	SIZE	PRODUCT CODE	PRICE
X SNO Plus M&S	14.00 R 24	53173	\$ 1,559.36
X SNO Plus M&S	17.5 R 25	99466	\$ 1,674.64
X SNO Plus M&S	20.5 R 25	62408	\$ 2,611.84
X SNO Plus M&S	23.5 R 25	74539	\$ 3,242.80
XTLA	17.5 R 25	04118	\$ 1,438.80
XTLA	20.5 R 25	09122	\$ 1,692.24
XHA2	20.5 R 25	84298	\$ 2,227.28
XHA2	23.5 R 25	65791	\$ 3,111.99
XHA2	29.5 R 25	82493	\$ 5,819.80
XGLA2	16.00 R 24	45611	\$ 1,975.38



Loaders

PRODUCT LINE	SIZE	PRODUCT CODE	PRICE
XHA2	26.5 R 25	65348	\$ 4,556.66

Scrapers

PRODUCT LINE	SIZE	PRODUCT CODE	PRICE
XTS	33.25 R 29	76725	\$ 9,176.64

Steer

PRODUCT LINE	SIZE	LOAD RANGE	PRODUCT CODE	PRICE
XZE	10R22.5	G	99141	\$ 477.95
XZE	12R22.5	H	85335	\$ 663.60
XZE2	11R22.5	G	78390	\$ 528.45
XZE2	11R24.5	G	91867	\$ 598.23
X Line Energy Z	11R22.5	G	03363	\$ 590.85
X Line Energy Z	11R22.5	H	06697	\$ 609.70
X Line Energy Z	11R24.5	H	18748	\$ 641.55

Wide Base Steer

PRODUCT LINE	SIZE	LOAD RANGE	PRODUCT CODE	PRICE
XZY 3 WB	385/65 R 22.5	J	53779	\$ 746.20
XZY 3 WB	425/65 R 22.5	L	40321	\$ 859.95

PASSENGER / LIGHT TRUCK

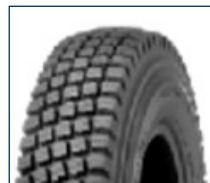
PRODUCT LINE	SIZE	PRODUCT CODE	PRICE
X-Ice Xi3	225/55 R 16	12342	\$ 153.90
X-Ice Xi3	225/65 R 17	23816	\$ 137.70



OTR

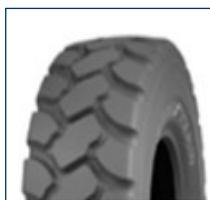
Priority

PRODUCT LINE	SIZE	PRODUCT CODE	PRICE
AS3A TG	20.5 R 25	155-118-860	\$ 2280.37
AS3A	17.5 R 25 LG 3G 4S TL	152-523-252	\$ 1757.73
AS3A	14.00 R 24TG G3 TL	152-475-283	\$ 1551.55
RT - 3B	20.5 R 25 TL	155-903-375	\$ 2349.50



Volume

PRODUCT LINE	SIZE	PRODUCT CODE	PRICE
RT - 3B	17.5 R 25 TL	152-524-375	\$ 1765.86
RT - 3B	23.5 R 25 TL	153-082-375	\$ 3,065.59
RT - 3A	33.25 R 29 TL E3	136-094-097	\$ 12306.47



PASSENGER / LIGHT TRUCK

PRODUCT LINE	SIZE	PRODUCT CODE	PRICE
WRL DURATRAC BSL	LT265/70R17	312-014-142	\$ 238.08
WRL DURATRAC BSL	LT245/70R17	312-022-142	\$ 213.12
WRL DURATRAC OWL	LT245/75R16	312-249-027	\$ 201.12
WRL AT ADVENTURE BSL	LT265/70R17	748-661-572	\$ 244.80
WRL AT ADVENTURE BSL	LT225/75R16	748-748-572	\$ 213.12
WRL AT ADVENTURE BSL	LT245/75R16	748-103-572	\$ 212.16

TRUCKS

Drive

PRODUCT LINE	SIZE	PRODUCT CODE	PRICE
G741 MSD TL	11 R 24.5	138-798-528	\$ 582.47
G622 RSD TL	225/70 R 19.5	139-418-205	\$ 343.44
G282 MSD	11 R 22.5	138-307-668	\$ 525.76

TIRE PROGRAM

We are proud to offer our members an efficient and competitively-priced Tire Program. Having gone through the RFP process on behalf of our membership, the program is fully compliant with the CFTA and other public procurement practices, meaning less red tape and easier purchases for members. The current standing offer program evolved from our historic approved supplier model to meet the needs of our members in the current market.

Through an open RFP process conducted on behalf of the membership across Canada, Goodyear, Kal Tire, Tirecraft, and Michelin were selected as approved suppliers for the national Tire Program

HOW IT WORKS

1. Determine what tires you require.
2. Go to your preferred supplier to order your selected tires.
3. Notify the supplier that you are ordering through the national account of the cooperative procurement program.
4. Provide your PO# and "Ship to" information.
5. Your local partnered municipal association will be listed in the "Bill to" information.

NOTE: National tire account pricing is proprietary information and will not be available at the point-of-sale.

PRODUCT OFFERING



OTR

- ◆ Bridgestone
- ◆ Yokohama
- ◆ Nokian
- ◆ Firestone
- ◆ Maxam
- ◆ Michelin
- ◆ Westlake

Agricultural

- ◆ Firestone
- ◆ Michelin
- ◆ Nokian
- ◆ BKT
- ◆ Westlake

Retread

- ◆ Bandag Commercial Truck Retreading
- ◆ Kal Tire Mold Cure OTR Retreading

Commercial Truck (Medium)

- ◆ Bridgestone
- ◆ Firestone
- ◆ Michelin
- ◆ Sumitomo
- ◆ Yokohama
- ◆ Sailun
- ◆ Westlake /Rakla

Passenger / Light Truck

- ◆ Bridgestone
- ◆ BF Goodrich
- ◆ Yokohama
- ◆ Nokian
- ◆ Firestone
- ◆ Nitto
- ◆ Michelin
- ◆ Sumitomo
- ◆ Multi Mile / TBC
- ◆ Goodride



OTR

- ◆ Bridgestone
- ◆ Firestone
- ◆ Yokohama
- ◆ Dynamic
- ◆ Tech King
- ◆ Triangle

Agricultural

- ◆ Michelin
- ◆ BKT
- ◆ Firestone
- ◆ Alliance

Retread

- ◆ Michelin Retreat Technologies (MRT)

Commercial Truck (Medium)

- ◆ BFGoodrich
- ◆ Michelin
- ◆ Yokohama

Passenger / Light Truck

- ◆ BFGoodrich
- ◆ Bridgestone
- ◆ Continental
- ◆ Cooper
- ◆ Dick Cepek
- ◆ Dunlop
- ◆ Falken
- ◆ Firestone
- ◆ General Tire
- ◆ GT Radial
- ◆ Hankook
- ◆ Michelin
- ◆ Mickey Thompson
- ◆ Pirelli
- ◆ Toyo
- ◆ Uniroyal
- ◆ Westlake
- ◆ Yokohama

Note: Tirecraft is only available in Ontario and the Tirecraft Edmonton Truck Center in Alberta.