

# Development Standards Collaborative Approach

**WHENEVER. WHEREVER.**  
**We'll be there.**

NEWFOUNDLAND   
**POWER**  
A FORTIS COMPANY



# Newfoundland Power

- Investor-owned (Fortis)
- Approx. 267,000 customers (87% of electricity consumers)
- Approx. 650 employees
- Publically regulated (PUB)



WHENEVER. WHEREVER.  
We'll be there.

NEWFOUNDLAND  
**POWER**  
A FORTIS COMPANY

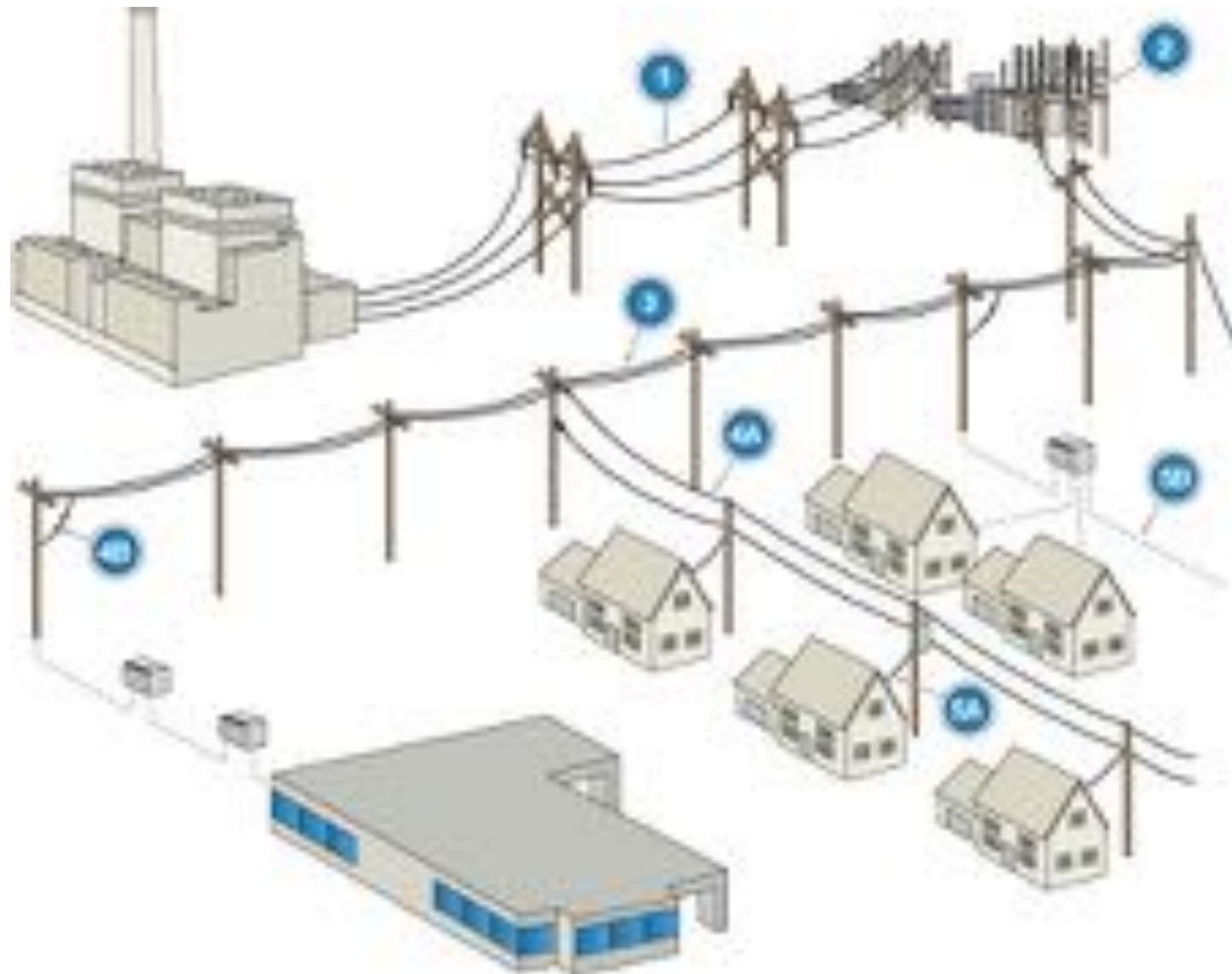
# Purpose

- Collaboration
- Working Committee
- Shared Standards



# Agenda

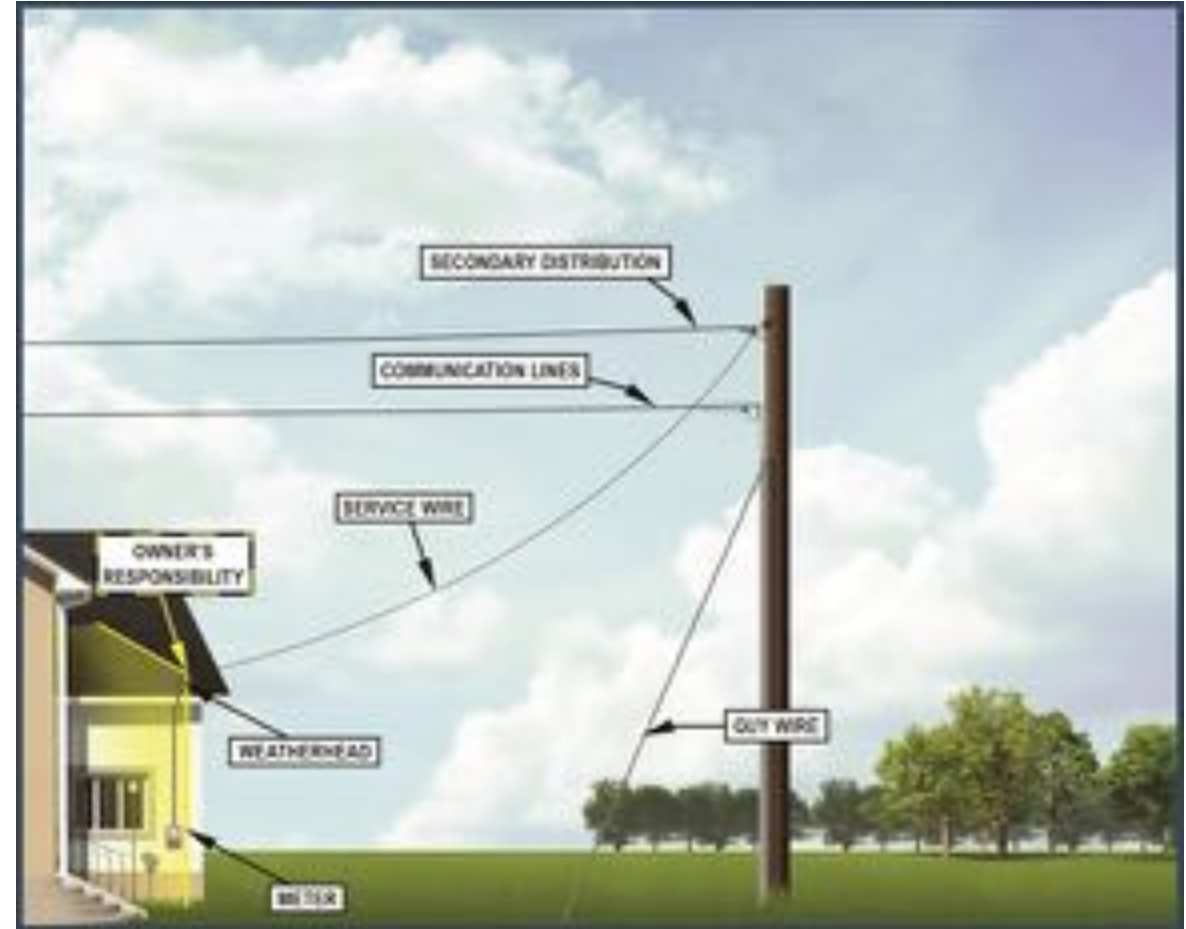
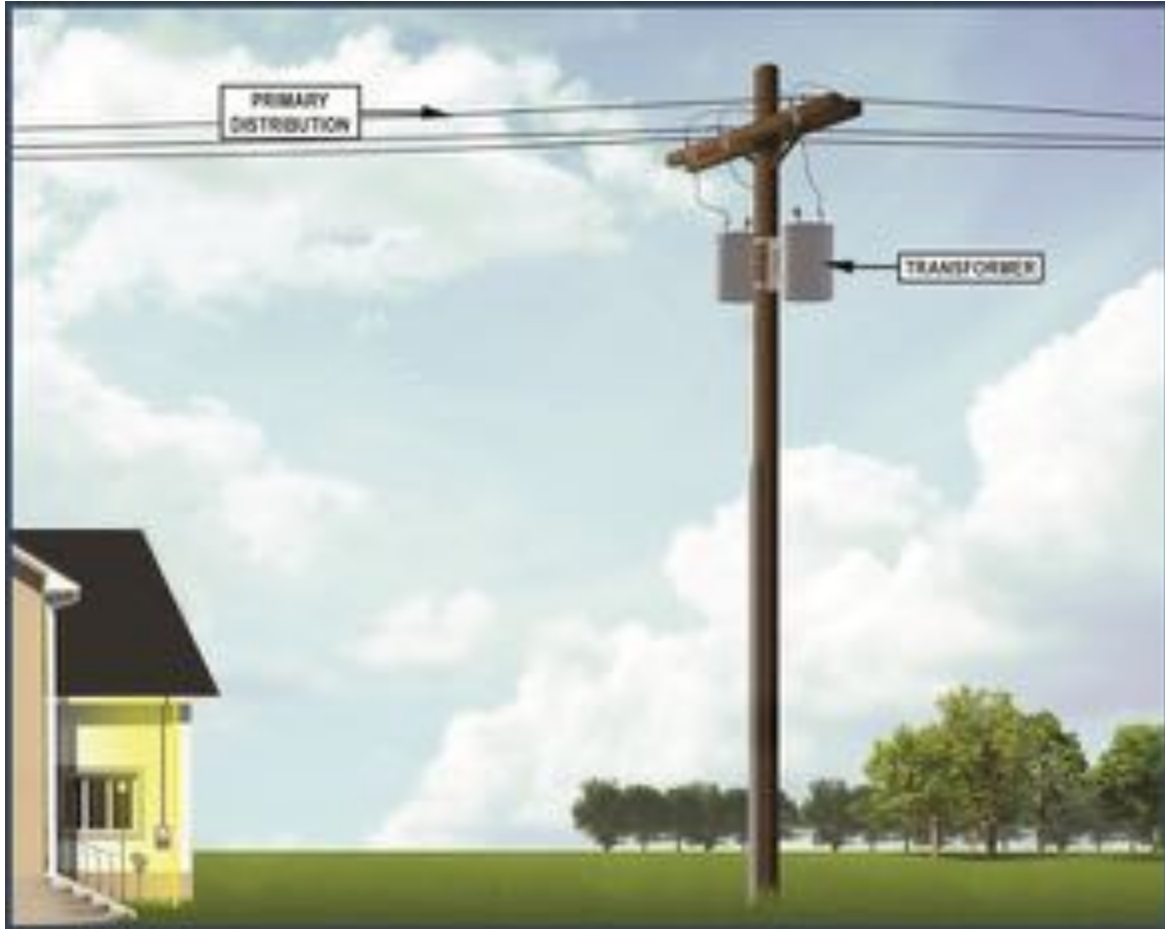
- Electrical System Design Overview
- Current Situation
- Opportunities
- Benefits of Collaboration
- Possible Outcomes



WHENEVER. WHEREVER.  
We'll be there.

NEWFOUNDLAND  
**POWER**  
A FORTIS COMPANY

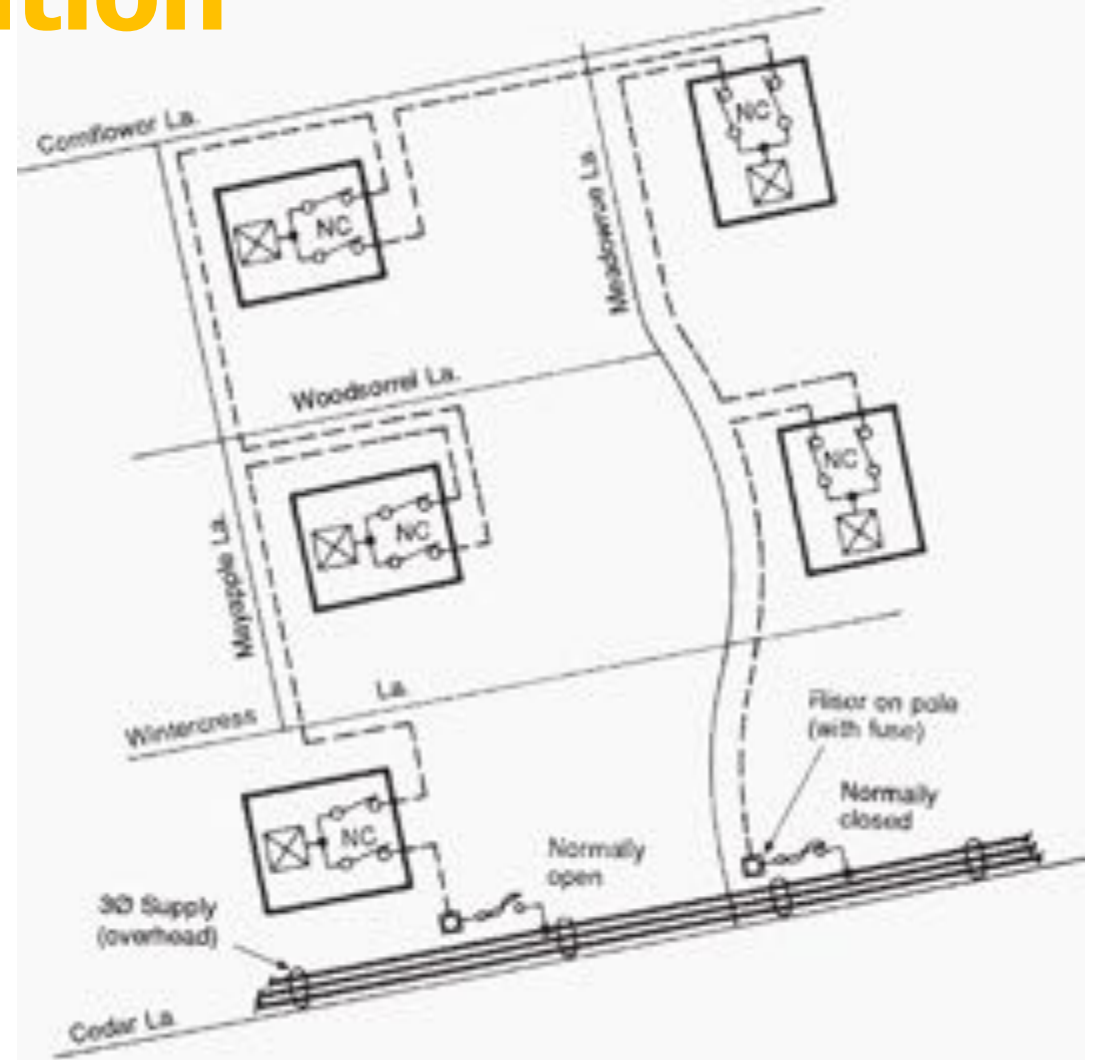
# Aerial Distribution



WHENEVER. WHEREVER.  
We'll be there.

NEWFOUNDLAND  
**POWER**  
A FORTIS COMPANY

# Underground Distribution



WHENEVER. WHEREVER.  
We'll be there.

NEWFOUNDLAND  
**POWER**  
A FORTIS COMPANY

# Municipal Feedback



WHENEVER. WHEREVER.  
We'll be there.

NEWFOUNDLAND  
**POWER**  
A FORTIS COMPANY

# NF Power Observations

- Multiple Civil Standards
- Lengthy Approval Process
- Developer Relationships
- Missed Opportunities

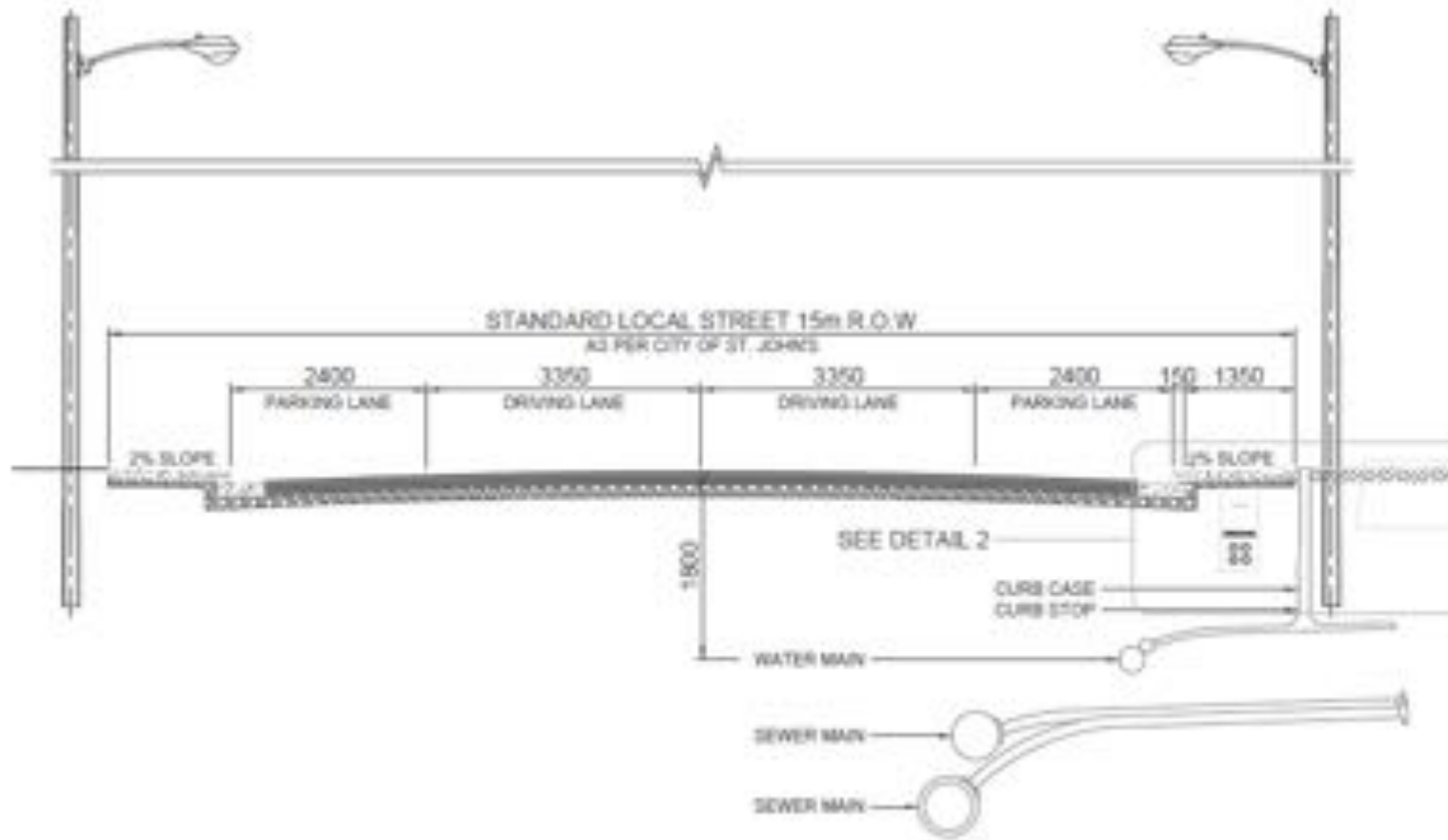
# Evolution of Distribution Design



**WHENEVER. WHEREVER.**  
We'll be there.

NEWFOUNDLAND  
**POWER**  
A FORTIS COMPANY

# Why Develop Shared Standards?



DETAIL - PROPOSED UNDERGROUND INFRASTRUCTURE  
SCALE 1:100



WHENEVER. WHEREVER.  
We'll be there.

NEWFOUNDLAND  
**POWER**  
A FORTIS COMPANY

# Benefits of Collaboration



WHENEVER. WHEREVER.  
We'll be there.

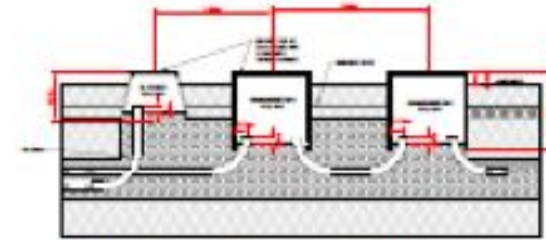
NEWFOUNDLAND  
**POWER**  
A FORTIS COMPANY

# Results

- Building Relationships
- Consistency
- Approval Process



# Committee Topics



15 TRANSFORMER GROUNDING AND PROTECTION DETAIL  
SCALE: 1/8" = 1'-0"



1 TRENCH DETAIL  
SCALE: 1/8" = 1'-0"



2 TRENCH DETAIL  
SCALE: 1/8" = 1'-0"

WHENEVER. WHEREVER.  
We'll be there.

NEWFOUNDLAND  
**POWER**  
A FORTIS COMPANY

**WHENEVER. WHEREVER.**  
**We'll be there.**

